



COMPANY PROFILE



Underground Services Located | Ground Penetrating Radar | Vacuum Excavating & Pot Holing | Horizontal & Directional Drilling
Trenching, Excavation & Rocksaw Services Available

Contents

Company Introduction.....	3
Company Policies and Objectives	4
Health & Safety Policy.....	4
Environmental Policy.....	5
Quality Policy	5
Company Details	6
Company Organization	7
Management Staff Profiles.....	8
Hauling Manager	8
Hauling Crews	8
Accreditations / Licenses	10
Memberships	11
Key Customers	11
Significant projects.....	12
Plant and Equipment	16
Directional Drilling Machines	16
Hydro Excavation Vacuum System	16
Cable Plough.....	17
Hydro Excavation Support Equipment	17
Trenching Machines	17
Rocksaw	17
Construction Plant.....	17
Hauling Equipment.....	18
General Vehicles.....	18
General Plant	18
Survey.....	18
Software.....	18
Additional Information (upon request):	19

Company Introduction

The company established in South Australia in September 1993 was formed to provide a specialized service to all divisions of the underground cabling and trenching industrial workplace. Born out of a need for a dedicated provider to this segment of business, the organization has forged an impressive record of achievement via its support and leadership of community related improvements to ecological and environmental procedures.

Since being established Trenchless Pipelaying Contractors has developed significant expertise and experience. This has enabled the company to branch out from underground communication construction work, to electrical reticulation, high pressure gas installation, boring, civil construction, manhole construction, cable hauling, service depthing, potholing and cable locating in addition to the other areas where further opportunities are being pursued.

Trenchless Pipelaying Contractors has established a design cell with Telstra accredited designers. This has given us the capability to undertake Telstra based communications design requirements.

Trenchless Pipelaying Contractors is a strongly Client focused company, this is evident from our Company Policies and Objectives in addition to our accreditation with the Civil Contractors Federation's National Pre-qualification Certification and Cm3 Contractor Pre-qualification.

Trenchless Pipelaying Contractors is proudly South Australian with 100% employment of local staff and links to other South Australian businesses and contractors who also are local and employ local workers.

Underground Services Located | Ground Penetrating Radar | Vacuum Excavating & Pot Holing | Horizontal & Directional Drilling
Trenching, Excavation & Rocksaw Services Available

Company Policies and Objectives

Trenchless Pipelaying Contractors are industry leaders in Horizontal Directional Drilling and civil construction. We achieve this by keeping abreast of the latest technology applicable to our operations, extensive staff and project experience, customer focus, delivery of quality, on time, on budget and creative solutions.

Health & Safety Policy

It is our company policy that activities will be undertaken using all reasonable and practical measures to avoid risk to the health and safety of its employees and other persons who may be affected.

The principle objectives of our Health & Safety Policy are:

- The maintenance of a safe environment and safe workplaces
- The prevention of pollution
- Strong leadership and accountability in framing and driving desirable WHS outcomes
- Ongoing evaluation of compliance with WHS laws and requirements
- Adopting ecologically sustainable development principles
- Consultation on issues that may affect an individual's health and safety
- Proactively identifying and managing WHS risks, and implementing effective controls and systems of work
- Effective management of the processes around land access and statutory approvals
- Reducing our energy, water and natural resources consumption and waste generation
- Identification and development of strong risk controls
- Integrating WHS in the planning, design, importing and manufacture of goods
- Providing all necessary supervision, training, instruction, equipment and information to employees and visitors to our workplaces
- Setting and achieving WHS objectives, targets and improvement plans
- Measuring and evaluating our WHS performance through regular audits, inspections and internal reporting
- Recognizing outstanding WHS performance
- Seeking and respecting community views
- Maintenance of QMS certification which conforms to Industry accepted standards based on AS-ISO 9001 (Quality), AS/NZ 4801 (Occupational Health and Safety) and AS-ISO 14001 (Environment)

Environmental Policy

It is our policy to minimise and avoid environmental impacts throughout our working activities.

The key environmental concerns taken into consideration include:

- comply with all environmental legislation, formal agreements, and relevant industry standards
- measure and continually improve our environmental performance and environmental management system
- ensure environmental impacts are considered in the planning, design, construction, decommissioning and operation of our work
- recognise the biodiversity of areas under its operational control, and avoid unnecessary disturbance to cultural and natural sites of significance
- respond openly and constructively to the reasonable expectations of the community on environmental matters
- promote an attitude of care and responsibility and a sense of stewardship for the environment by employees through environmental education and training
- use resources efficiently, minimise waste and where practicable reuse or recycle materials generated by our operations
- inform agents, advisers, contractors and consultants of the Environmental Policy

Quality Policy

Trenchless Pipelaying Contractors assures all clients that we are wholly committed to supplying services with the highest standards and to the individual client's requirements. Our company gives this assurance by implementing and proactively managing a quality management system which provides customers with the confidence that we will:

Achieve operational excellence through the development, implementation and continual improvement of effective management systems integrating quality, environment, health and safety activities

Seek relevant certification of its management systems where appropriate to the requirements of the International Quality Standard ISO 9001 or other applicable standards

Provide adequate resources to continually review and improve our business process

Set objectives and targets to measure our performance and identify opportunities for improvement

Encourage all workers and subcontractors to integrate quality management into the way we work and promote its application as a method for continual improvement within their area of responsibility

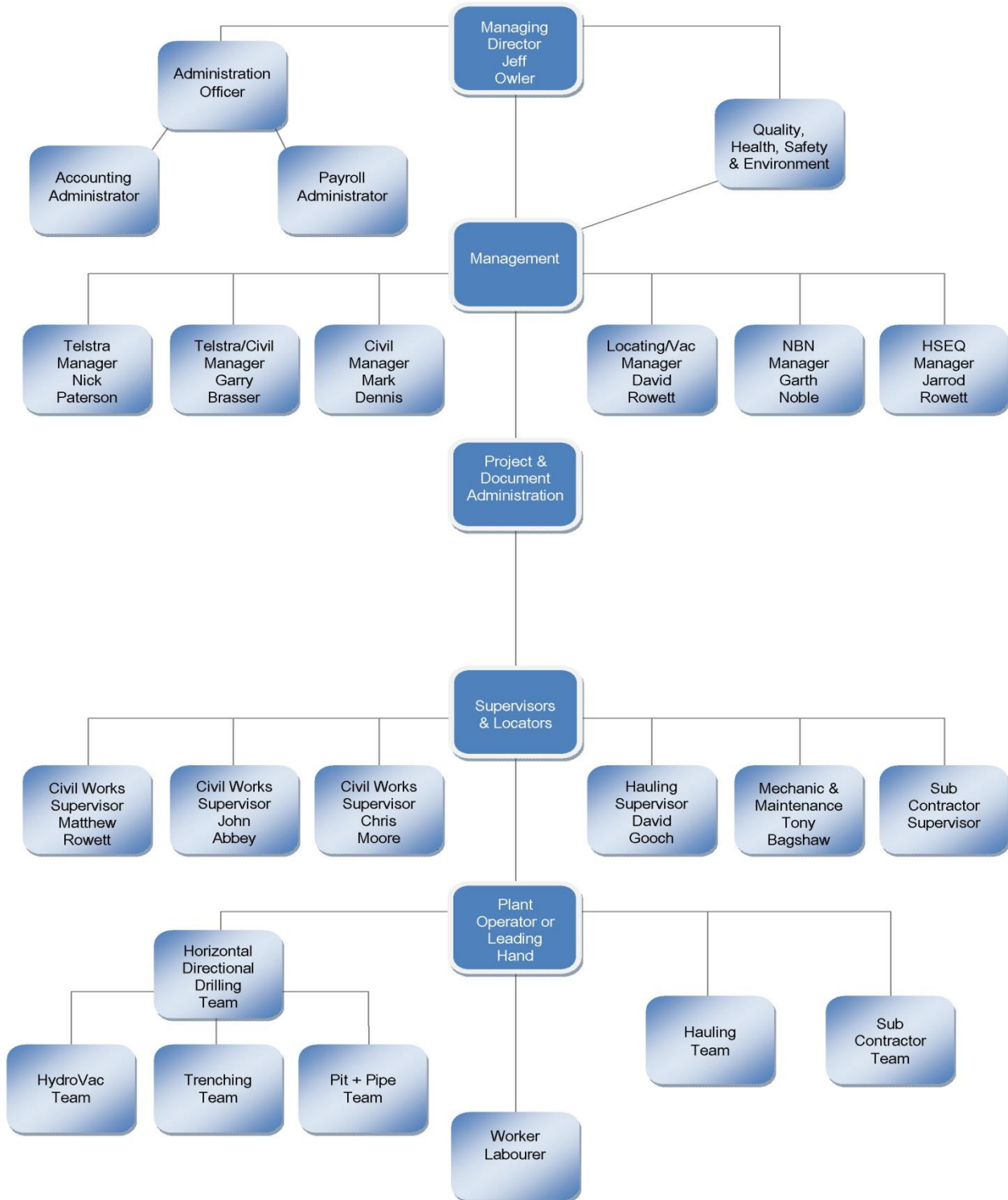
Trenchless Pipelaying Contractors conforms to Industry accepted standards based on AS-ISO 9001 (Quality), AS/NZ 4801 (Occupational Health and Safety) and AS-ISO 14001 (Environment)

Company Details

Trading Address	42 – 46 Kinkaid Avenue North Plympton South Australia 5037
	Telephone: (08) 8376 5911 Fax: (08) 8376 5944 Email: tpc@trenchlesspipelaying.com.au Website: www.trenchlesspipelaying.com.au
Postal Address	P.O. Box 165 Plympton SA 5038
ABN Number	56 620 813 550
Contact	Managing Director Mr. Jeff Owler Telephone: (08) 8376 5911 Facsimile: (08) 8376 5944 Mobile: 0412 342 106

Underground Services Located | Ground Penetrating Radar | Vacuum Excavating & Pot Holing | Horizontal & Directional Drilling
Trenching, Excavation & Rocksaw Services Available

Company Organization



Underground Services Located | Ground Penetrating Radar | Vacuum Excavating & Pot Holing | Horizontal & Directional Drilling
Trenching, Excavation & Rocksaw Services Available

Management Staff Profiles

Managing Director - Jeff Owler

Jeff has 25 years' experience in the Electrical and communications Contracting industry, Jeff commenced an electrical mechanics apprenticeship in 1992 and worked throughout Australia on various projects in the Industrial and commercial sector.

Jeff had a 9 year career in Supervision and on site management at O'Donnell Griffin in South Australia and then 9 years in senior management for Nilsen in South Australia and Northern Territory.

Jeff has a strong focus on customer and personnel relations ensuring we continue to run a successful business.

HSEQ Manager - Jarrod Rowett

HSE Manager, Quality Manager, Project Administrator, Manager, Purchasing, GPS Survey and CAD Drafting. Previous experience at TPC in excavation, pit / pipe installation and cable hauling and Traffic Planning for Traffic Tech in addition to many other ventures.

Certificate IV in WHS

Jarrod manages Health, Safety, Environment and Quality systems in addition to administering and managing Optus, TPG, Vocus and SABRENet clients, Tender and Contract review and submission, Stock control and Purchasing, As-built preparation and submission for these clients as well as maintenance, training and data handling, processing and submission and training for GNSS GPS Survey equipment.

Civil Manager - Mark Dennis

Senior supervisor within the building industry, managing construction works and staff 1978 – 1994.

Commenced work with Trenchless Pipelaying Contractors in 1994, performing civil construction works. This includes service locations, pneumatic and directional boring in metropolitan, country and remote locations.

Mark has extensive experience in the scheduling of works and associated plant and staff resources, site works management, staff supervision and plant repairs and maintenance.

NDC Site and Facilities accreditation, STA Traffic management accreditation, Pit/pipe and hauling trained.

Telstra Manager - Nick Paterson

20 years experience with PMG – Telstra External Plant Area including Supervisor & Lines Officer in charge at Glenelg & Task Force. 7yrs experience at Adelaide South Estimating & Assignment area before being appointed as a Technical Instructor for his last 8 yrs at Telstra.

In 1993 Nick formed Paterson Training Services specializing in communications training and work place assessment.

In 1998 Nick joined Skilled Communications as a supervisor in the Telstra Contracts area, he then followed on to STCJV – Silcar as the New Estates Manager where his responsibilities included liaising with developers & coordinating subcontractors. He also acted as relieving State Manager & assumed responsibilities as the RW manager.

Telstra & Civil Manager - Garry Brassler

Telecom Projects Manager 1975 – 1987 managing special projects in customer service and access networks.

Supervisor of special projects in the civil construction sector.

Sub-contractor specialising in landscaping and floral displays for special events 1987 – 1994.

Joined Trenchless Pipelaying Contractors in 1994, performing civil construction works, scheduling of works and plant as well as staff and site supervision.

NDC Site and Facilities accreditation, STA Traffic management accreditation, Pit/pipe and hauling accredited.

NBN Project Manager - Garth Noble

Garth joined TPC in 1998 and has experience in excavation, pit / pipe installation, directional drilling, locating and cable hauling. Garth has been a Senior Supervisor since 2005.

Garth worked as Senior Supervisor on NBN with Garry Brassler managing the various NBN projects/packages TPC has received through SAPN & ETSA since the initial test site package in Willunga 2010.

In 2017 Garth assumed the Manager Role for NBN works packages.

Locating/Vac Manager, Senior Service Locator – David Rowett

1997 – 2005 Directional Drill Operator

2005 - Current Locating Manager, Senior Services Locator

David manages TPC's locators and key works focused on locating existing underground services and TPC's Hydro Vacuum trucks used for pothole identification of these services.

Performing Copper Cable, Fibre Cable, Power, Water, Gas Locations for Telstra, Telstra Clients, other authorities, civil construction companies, general public etc.

This includes the use of specialized location equipment, beacon rodders and ground penetrating radar.

All TPC locators are Telstra Accredited Locators

Accreditations / Licenses

CCF – Contractor Management Systems Certification

Cm3 – Prequalified Contractor

EPA License (EPA 14483)

Builders License (BLD 191766)

Pit and Pipe Construction

DPTI – Workzone Traffic Management Accredited Workers

Copper and Optical Fibre Hauling

Telstra and NDC Facilities Induction Ticket

Working in ETSA Sub-station accreditation

Telstra Network Design

Copper Cable Jointing

Safework SA conditional B class Asbestos Removal License.

Optical Fibre Splicing

Manhole Construction

First Aid

Rail Safety Awareness

Explosive tools Ticket

Telstra Accredited Locators

Telstra Asbestos/ACM assets removal Workplace Assessed and Compliant

NBN Accredited Workforce

Memberships

Civil Contractors Federation
ICN Gateway

Key Customers

Telstra Corporation Ltd

- Major & Minor Recoverable Works
- Commercial Works & Asset Relocations
- Preferred Locator

DPTI – Department Planning Transport & Infrastructure

VOCUS Telecommunications

- Preferred Locator

SAPN - SA Power Networks

SABRENet

Origin Energy

Visionstream

Optus

NextGen

Adelaide University

TPG Telecom

Underground Services Located | Ground Penetrating Radar | Vacuum Excavating & Pot Holing | Horizontal & Directional Drilling
Trenching, Excavation & Rocksaw Services Available

Significant projects

- 2016-2017 NBN SA Power Networks - Gepps Cross and Port Pirie**
- Installation of new NBN network including locating existing services, Horizontal Directional Drilling of communications conduits, Pit repairs / Installations and hauling of optic fibre cables
- 2016-2017 YORK CIVIL – Darlington Trunk Water Main Upgrade**
- Locating, Service Pothing, Survey, Data documentation.
 - Horizontal Directional Drilling of various conduits from 125mm OD to 500mm OD under South Rd
- 2016-2017 VOCUS – Various Major Sites in South Australia**
- Locating, Service Pothing, Pit Remediation, Hydro Excavation, Horizontal Directional Drilling, Pit Installation, Optic Fibre Cable Hauling.
- 2016-2017 SABRENET – Various Major Cable upgrades CBD Adelaide & Northern Suburbs**
- Civil works including directional drilling of communications conduits, pit installations and trenching of link pipes to provide backbone upgrades to various Major facilities
 - Hauling of optic fibre cable and copper cables through new and existing networks
- 2016-2017 TPG Telecom– Various Major Mobile Sites in South Australia**
- Civil works including directional drilling of communications conduits, pit installations and trenching of link pipes to provide backbone upgrades to various Major Mobile facilities
 - Hauling of optic fibre cable and copper cables through new and existing networks
- 2016 DPTI – 16C215 Directional Boring at ELIZABETH**
- Provide service locations of existing networks
 - Directional bore and install various 100mm conduits including 3 way & 6 way conduit “stacks” under Main North Rd
- 2016 TELSTRA – Northern Connector**
- Locating, Service Pothing, Pit Remediation, Hydro Excavation, Horizontal Directional Drilling, Pit Installation, Optic Fibre Cable
- 2015-2017 TELSTRA - Torrens to Torrens (T2T – Pym St CROYDON to Torrens Av HINDMARSH)**
- Relocation of the existing Telstra network to allow for the construction of the T2T roadway project – includes - Horizontal Directional Drilling, Manhole construction / alteration works, Pit Installations, Optic Fibre & Copper Cable installation and recovery
- 2015-2016 DPTI – 15C547 Salisbury Hwy & Churchill Rd North DRY CREEK**
- Directional bore and install approx. 600m of communication conduits including under ARTC railway line
 - Installation and repair of pits
 - Rod, rope, prove conduits inside Rail yards at Dry Creek and Haul approx. 2900m of optic fibre cable.
- 2015-2016 NBN SA Power Networks - Mt Barker & Clovelly Park**
- Locating, Service Pothing, Pit Remediation, Hydro Excavation, Horizontal Directional Drilling, Pit Installation, Optic Fibre Cable Hauling.

- 2014-2015 DPTI - 14C037 Darlington Upgrade Project**
- Locating, Service Potholing, Survey, Data Documentation.
- 2014-2015 TELSTRA - Mile End South Relocation & Torrens to Torrens (T2T)**
- Locating, Service Potholing, Pit Remediation, Hydro Excavation, Horizontal Directional Drilling, Manhole Installation, Pit Installation, Optic Fibre Cable Hauling.
- 2014-2015 NBN SA Power Networks – Pt Elliot & Victor Harbor**
- Locating, Service Potholing, Pit Remediation, Hydro Excavation, Horizontal Directional Drilling, Pit Installation, Optic Fibre Cable Hauling.
- 2013-2014 DPTI - The installation of Fibre Optic Cable and Pits for the AMPRN Project - Signaling & Communications Project**
- Locating, Pit Installation, Optic Fibre Cable Hauling.
- 2012-2014 Urban Superway Joint Venture John Holland**
- Locating, Service Potholing, Hydro Excavation, Horizontal Directional Drilling, Pit Installation, Optic Fibre Cable Hauling.
- 2012-2014 DESA Edinburgh RAAF Base**
- Locating, Service Potholing, Hydro Excavation, Horizontal Directional Drilling, Pit Installation, Optic Fibre Cable Hauling.
- 2012-2013 ARTC numerous Remote Country Rail Sidings Signaling Upgrades**
- Locating, Service Potholing, Hydro Excavation, Horizontal Directional Drilling, Pit Installation, Optic Fibre Cable Hauling.
- 2012-2013 INVENSYS / SIEMENS AMPRN _Signaling & Communications Project C45162**
- Locating, Service Potholing, Hydro Excavation, Horizontal Directional Drilling, Pit Installation, Optic Fibre Cable Hauling.
- 2012 Transfield numerous Country Rail Crossing Upgrades**
- Locating, Service Potholing, Hydro Excavation, Horizontal Directional Drilling, Pit Installation, Optic Fibre Cable Hauling.
- 2011 NSISP North South Interconnection System Project.**
- Locating, Service Potholing, Survey, Data documentation.
- 2011 DTEI Southern expressway Duplication SExy 2011-032**
- Locating, Service Potholing, Trenching, Survey, Data documentation.
- 2011 Hansen Yuncken Adelaide Airport Optic Fibre Ring**
- Directional Drilling, Trenching, High security pit installation, Conduit installation, Locating, Service Potholing, Hauling, Hydro Excavation.

- 2010-2011 Greater Edinburgh Parks RAAF Base Edinburgh Redevelopment
1st Brigade (Adelaide) Relocation**
- Directional Drilling, Trenching, High security pit installation, Conduit installation, Locating, Service Potholing, Hauling, Hydro Excavation.
- 2010-2011 ETSA / NBN Co Willunga trial site**
- Full construction and Haul of FDA's 01, 02 & 06, the Trunk Fibre route from Aldinga to Willunga,
 - Directional Drilling, Trenching, Pit installation, Conduit installation, Locating, Service Potholing, Rock saw, Hauling, Hydro Excavation, Marker Post Survey, As built/Data documentation.
- 2010 Alano Water Loxton Reclaimed Water Project**
- Directional Drilling, Trenching, Conduit installation, Locating.
- 2009-2010 Adelaide Desalination Project 12km**
- Locating, Service Potholing
- 2009 Telstra Appointment - Asset Relocation & Commercial Works Panel Contractor Representative**
- Directional drilling, Trenching, Rock sawing, Ploughing of copper cable, Cable haul, Pit installation, Conduit installation.
- 2009 Amcom/SABRENet**
- Installation of approx. 4600m of conduit, pits & hauling of optic fibre to Torrens valley TAFE
- 2009 Amcom/SABRENet (Techport)**
- Installation of approx. 14,000m of conduit, pits, hauling, splicing & commissioning of 144core SMOF link to Maritime Skills Centre – Techport Precinct
- 2009 Telstra Coast to Coast light Rail Project (CCLR)**
- Relocation of Telstra's existing network to facilitate the Port Rd upgrade and Tram Line installation works.
- 2009 Telstra Project Disney**
- Hauling and recovery of large copper cable from the Pulteney Exchange to the Flinders Exchange
- 2009 Leeds - Christies Beach to Aldinga Southern Urban Reuse Project 35km**
- Locating, Service Potholing
- 2008-2010 Leeds - Glenelg to Adelaide Pipeline (Citygreen) 32km**
- Locating, Service Potholing
- 2008 Service Stream – Pt Wakefield Rd & Sturt Hwy Upgrades**
- Installation of multi conduit runs and pits for the relocation of the existing Telstra network.
 - Hauling of copper & fibre optic cables for the relocation of major Telstra network on Pt Wakefield Rd and Sturt Hwy.
- 2007 Telstra – Coober Pedy**
- Installation of 11km of conduits using trenching machines and rocksaw and 18km of copper cable hauling

- 2006 Appointment as a “Specialist Contractor” for Telstra**
- Boring and civil construction of underground communications distribution network including directional drilling, trenching, rock sawing, copper cable ploughing, cable hauling pit and pipe installation.
- 2006 ETSA Communications (Templers to Roseworthy)**
- Ploughing of 11km of optic fibre cable.
- 2006 Telstra – Roxby Downs**
- Ploughing of 7km of optic fibre cable, installation of pits & splicing & commissioning of fibre.
- 2005-2006 SILK Communications (ETSA) – Pt Lincoln, Pt Augusta & Whyalla**
- Boring, civils & hauling for the Broadband Optic Fibre Rollout.
- 2005 Ranger Mine, Kakadu**
- Trenching, Boring & ploughing approx. 10km of Optic Fibre cable.
- 2004 IEN Optic Fibre Norwood to Edwardstown to Lonsdale**
- Construction of Manholes & associated civil work & hauling of approx. 44km of optic fibre cable including splicing & commissioning of optic fibre cables.
- 2004 Wattle Point Wind Farm**
- Trenching, civil works, installation of approx. 40km of electrical transmission cables and optic fibre linking turbines to electrical substation.
- 2003-2005 Adelaide Airport (NDC & Hansen Yuncken)**
- Re-locate major Telstra plant including manhole construction and jointing of copper & optic fibre cables.
- 2002 Murraylink Interconnector (PIHA)**
- Boring and installation of 225HDPE and 200NB Steel conduits.

Plant and Equipment

The operators of all Plant and equipment have been trained and are fully accredited.

Directional Drilling Machines

- Ditchwitch 2020
- Ditchwitch 2720 AT
- Ditchwitch 3020 AT
- Vermeer 3650
- EasyDrill FD10G

Hydro Excavation Vacuum System

Vacmaster 4000 4x4

- Hydro-Excavation / Vacuum Truck with a 1.8 m³ debris tank and 85 gallon water tank feeding a variable 2500psi water pump with built in air compressor to feed jackhammer / compaction rammer. Ideal for use in road lanes and other small areas.

SpoutVac 6x4

- Hydro-Excavation / Vacuum Truck with 5.5 m³ debris tank and 3000litre water tank feeding a variable 2500psi water pump. Equipped with a variable 250litre per minute drain cleaning pump for clearing blockages and cleaning conduits. Ideal for large jobs - trenching or deep holes.

VTS 6x4 (x2)

- Hydro-Excavation / Vacuum Truck with 7.0 m³debris tank and 3000 litre water tank feeding a variable 2500psi water pump. Equipped with a variable 250litre per minute drain cleaning pump for clearing blockages and cleaning conduits. Ideal for large jobs - trenching or deep holes.

Jet Vac 4x2

- Hydro Excavation / Vacuum Truck with 2.2 m³ debris tank and 2000litre water tank feeding a 2500psi water pump.

Vermeer 6x4

- Hydro- Excavation / Vacuum Truck with 8.0 m³ debris tank and 2000litre water tank feeding a 3000psi water pump.

Vermeer 4x2

- Hydro Excavation / Vacuum Truck with 2.2 m³ debris tank and 2000litre water tank feeding a 2500psi water pump.

Vermeer 8x4

- MegaVac Hydro Excavation / Vacuum Truck with 8300L debris tank and 3500litre water tank feeding a 3500-5000psi water pump.

Cable Plough

- Ditchwitch 8020 Vibratory Plough

Hydro Excavation Support Equipment

- Kor-it Coring machine to depth services beneath a bitumen or concrete surface.
- Subsite Locator For locating ferrous underground services.
- GPR Ground Penetrating Radar for locating of non-ferrous underground services.

Trenching Machines

- Ditchwitch 8020 Turbo – 1400mm deep x 200mm wide
- Ditchwitch 3700 – up to 1000mm deep x 150mm wide
- Vermeer RT950 – 1400mm deep x 250mm wide
- 2 x Bobcat with vibratory trench compactor

Rocksaw

- Ditchwitch T8020 – Turbo charged Rocksaw
(Cutting width 110mm or 150mm at a depth of upto 950mm)
- Vermeer V120 – Rocksaw
(Cutting width 110mm or 150mm at a depth of upto 950mm)

Construction Plant

- 1 x Volvo Excavator (14 Tonne)
- 2 x Yanmar Excavator with Rock Breaker (4.5 Tonne)
- 2 x Yanmar Excavators with rock breakers (3.7 Tonne)
- 7 x Yanmar Excavators (2 Tonne – 3.5 Tonne)
- 1 x Bobcat with backhoe capabilities
- 2 x JCB Backhoes
- 1 x Tandem Tip Truck (15 Tonne)

Hauling Equipment

- 3 x Hauling Trucks
- 1 x 45KN Truck mounted capstan winch (Steel Cable)
- 1 x Land Rover with hydraulic cable winch (accredited for Optic Fibre hauling)
- 1 x 4WD with hydraulic cable winch (accredited for Optic Fibre hauling)
- 2 x Cable Jinkers (6 Tonne)
- 2 x Cable Jinkers (3 Tonne)
- 3 x Cable Jinkers (1 Tonne)

General Vehicles

- 8 x Tip Trucks (5 – 8 Tonne)
- 2 x Tip Trucks (1 – 3 Tonne)
- 1 x Crane Truck (8 Tonne)
- 5 x Line Trucks
- 8 x Utilities (1 Tonne)

General Plant

- Air Compressors / Conduit Blowers
- Jackhammers
- Core Drilling Equipment
- Whackers – compactors
- Gas Detectors
- Cable Locators
- Road signage and Protective barriers

Survey

- Leica Viva GNSS / GPS
With SmartNetAus license for RTK correction.

Software

- IMSIDesign TurboCAD Deluxe 15
- AutoCad Civil 3D
- Autodesk Design Review
- Microsoft Office
- Leica Geo Office

Additional Information (upon request):

Builders License

Environmental Protection Agency License

Public Liability certificate of currency (\$20,000,000.00)

Return to Work SA

CCF QMS Contractor Management Certification

Underground Services Located | Ground Penetrating Radar | Vacuum Excavating & Pot Holing | Horizontal & Directional Drilling
Trenching, Excavation & Rocksaw Services Available